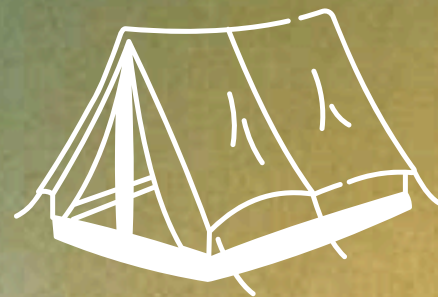
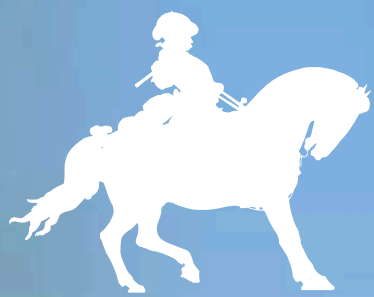


Battle of Waterloo & Bivouacs



28 & 29 JUNE 2025



VIEWER'S GUIDE

WWW.BATAILLEWATERLOO.BE



READY TO TRAVEL BACK IN TIME ?

Official reenactment
210th anniversary of the Battle of Waterloo.

 Battlefield of Waterloo
& Napoleon's Last Headquarters.

A TOUCH OF HISTORY TO BETTER EXPERIENCE THE EVENT.

On June 18, 1815, in the plains of Waterloo, the fate of Europe was decided. After his return from the island of Elba, Napoleon Bonaparte attempted one last dramatic move: to confront the allied armies of the Duke of Wellington and Marshal Blücher before they could regroup.

During this decisive day, more than 180,000 men clashed in a fierce battle lasting ten hours, marked by cavalry charges, the roar of cannons, and infantry maneuvers. The battle ended with the defeat of the Emperor and marked the definitive end of the First Empire.

Since then, Waterloo has become a universal place of remembrance. Every year, enthusiasts from all over the world gather here to pay tribute to this significant chapter of our history.

In 2025, we will commemorate the 210th anniversary of the battle with the largest reenactment since the bicentennial of 2015: a living, spectacular, moving event, but also educational and festive.

Two major reenactments, over 2,000 reenactors in uniforms, 100 horses, 25 cannons, historical encampments, a civilian village with artisans and activities, shows, workshops, and food.

WHERE DOES THE EVENT TAKE PLACE? IN 3 AREAS:

Battlefield of Waterloo 1815

(Butte du Lion, Mémorial, Panorama)
Route du Lion 1815, Braine-l'Alleud

Hougoumont Farm

Chemin du Goumont, Braine-l'Alleud

Napoleon's Last Headquarters

Chaussée de Bruxelles 66, 1472 Genappe

WHEN TO VISIT THE BIVOUACS ?

Saturday from 10h00 – 18h00 & **Sunday** from 12h30 – 17h00

WHAT IS HAPPENING AT NAPOLEON'S LAST HEADQUARTERS?

This is where it all began: Napoleon prepared his final battle here. The site becomes a living camp with 1,500 soldiers.

Discover: cartridge making, recruit training, the Emperor's guard, horse care, the 1809 ambulance, maneuvers, and cavalry.

HIGHLIGHTS ON SATURDAY

11h15 : Arrival of Napoleon + Music of the Imperial Guard.

13h00 : Commented imperial meal.

14h00 : Grand maneuver

17h00 : Departure of the cavalry

Activities: dances from the First Empire, theater as in 1815, soldier's school.

Visit the museum as well.

WHAT IS HAPPENING AT THE HOUGOUMONT FARM?

The allies' camp with:

SATURDAY

- **10:00–12:00 & 13:00–15:00:**
- Infantry exercises
- **12:00:** English ceremony
- **13:30:** Artillery demonstration
- **14:00:** "Crown Forces Drums Corps" concert
- **15:00–16:30:** Afternoon High Tea (with Wellington & Blücher)
- **17:30:** Gathering & departure of the troops

SUNDAY

- **14:00:** Saber demonstration & rifle shooting
- **15:00:** Allied troops ceremony
- **15:00–18:00:** Military music concerts

Take the opportunity to discover the new museum halls and the sound and light show!

AND AT THE BATTEFLIED OF WATERLOO ?

Civilian village (around fifty artisans) and activities (Panorama esplanade).

**BARBER
SURGERY
FORGE
ARTILLERY
CONSCRIPTION**

....

CANNON SHOTS

Saturday : **12h00, 14h00, 15h00, 16h00, 17h00**

Sunday : **13h00, 14h00, 15h00, 16h00, 17h00**

Mémorial, Panorama, Lion's Mound and LEGO* expo :

Saturday 9h30-19h00 (Last entrance 17h30)

Sunday 10h00-18h30

(*Separate Ticket)

What are the timings for the reenactments?

Saturday at 19h30 (Doors open at 18h00)

Sunday at 10h30 (Doors open at 9h30)

WHERE IS THE BATTLEFIELD LOCATED?

At the foot of the Lion's Mound

IS THERE A TICKET OFFICE ON SITE?

Yes. We have a ticket office for the show at the entrance to the stands (bleachers).

Saturday from 16h30 to 20h00

Sunday from 9h30 to 11h00

IS THERE AN ACCESSIBLE AREA FOR PEOPLE WITH REDUCED MOBILITY?

Yes, an accessible area for people with reduced mobility is available.



**REMEMBER TO BRING
HEARING PROTECTION.**

FREE SHUTTLES

Continuous service

.....

Shuttle 1: Napoleon's Last Headquarters → Battlefield Domain → Hougoumont Farm

Shuttle 2: Battlefield → Hougoumont → Battlefield → Napoleon's Last Headquarters

SATURDAY SCHEDULE

Every 30 minutes from 10h30 until 17h30

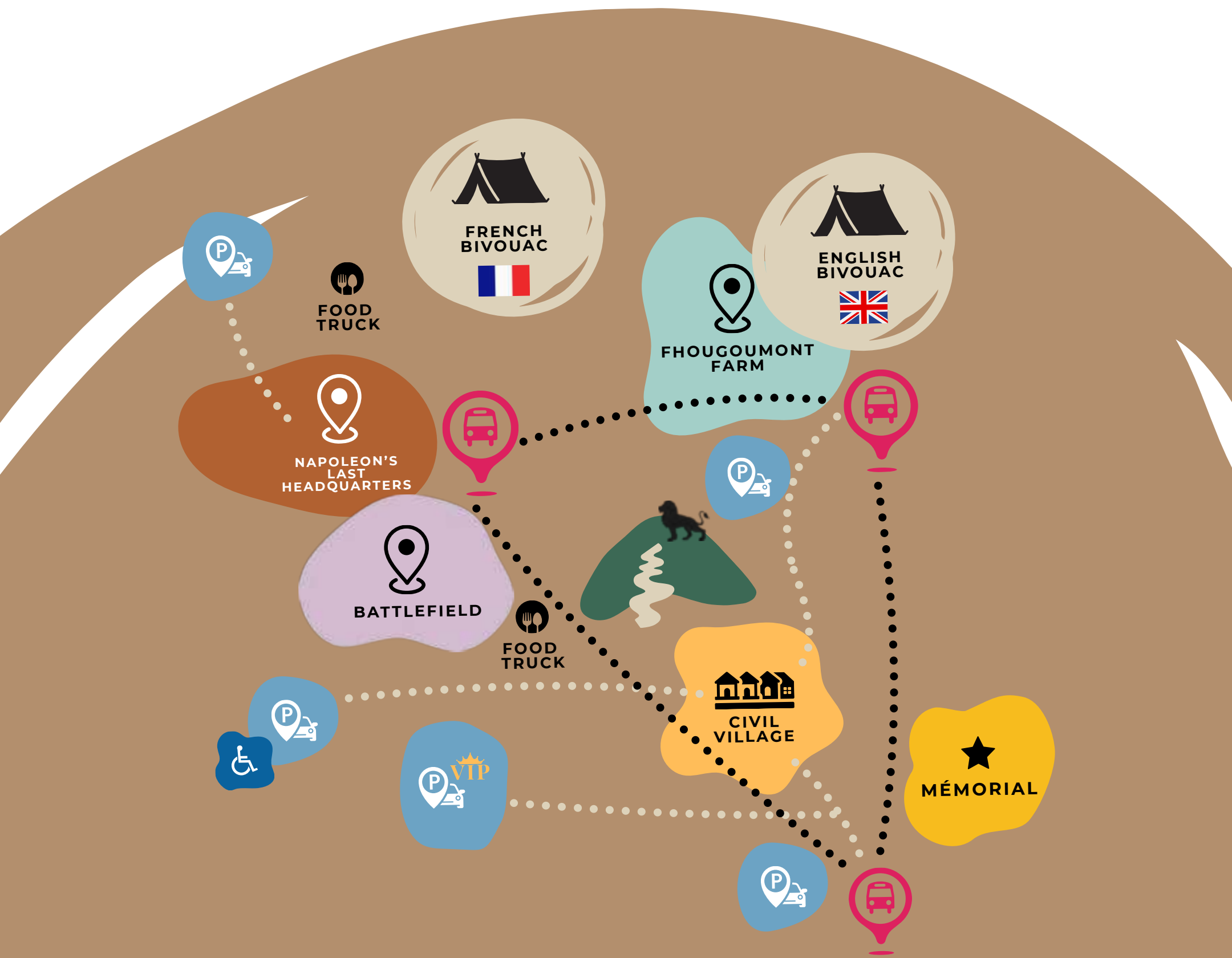
(Departure from Napoleon's Last Headquarters and/or the Domain)

Attention: no return shuttle after the major reenactments on Saturday evening at Napoleon's Last Headquarters. The last shuttle from Napoleon's Last Headquarters to the domain is at 17:30.

SUNDAY SHCEDULE

Napoleon’s Last Headquarters : Every 30 minutes from 12h30 until 18h

Battlefield Domain : Every 30 minutes from 12h until 17h30



WHERE TO EAT ?

Napoleon's Last Headquarters : Covered horeca area (200m²), savory/sweet snacks, bar from 10:00 to 21:00.

Hougoumont : Drinks stand, bread and sausages

Café Le Bivouac (self service, Choice of 5 dishes or a 3-course menu.)

Waterloo Beer Village* : Saturday from 16h30,
Sunday from 9h30

*Accessible only with a ticket for the show.

Restrooms on all sites.



Where to park ?

Official paid parking (9 €).

Mémorial Parking

Accessible via chaussée de Nivelles

(📍 50.681143, 4.401411)

Parking at the Hougoumont Farm

Accessible via chaussée de Charleroi

(📍 50.674949, 4.393699)

Accessible parking (PRM) : Route du Lion 377, Waterloo

Bicycle/motorcycle parking: Mémorial.

(📍 50.681143, 4.401411)

Camping-cars prohibited

Parking at Napoleon's Last Headquarters*

(📍 50°38'34.4"N 4°25'20.1"E)

***Approximately 4 km away. No return shuttle after the battle on Saturday evening, nor before the battle on Sunday morning. Ideal parking for visiting Napoleon's Last Headquarters, but not for attending the battle.**



SITE MAP



WATERLOO FOR DUMMIES.



Wellington's Army

When asked before the start of the Waterloo campaign whether he thought he could defeat the French, the Duke of Wellington pointed to a British soldier and said: "That depends on this article: give me enough of them, and I'm sure of it."

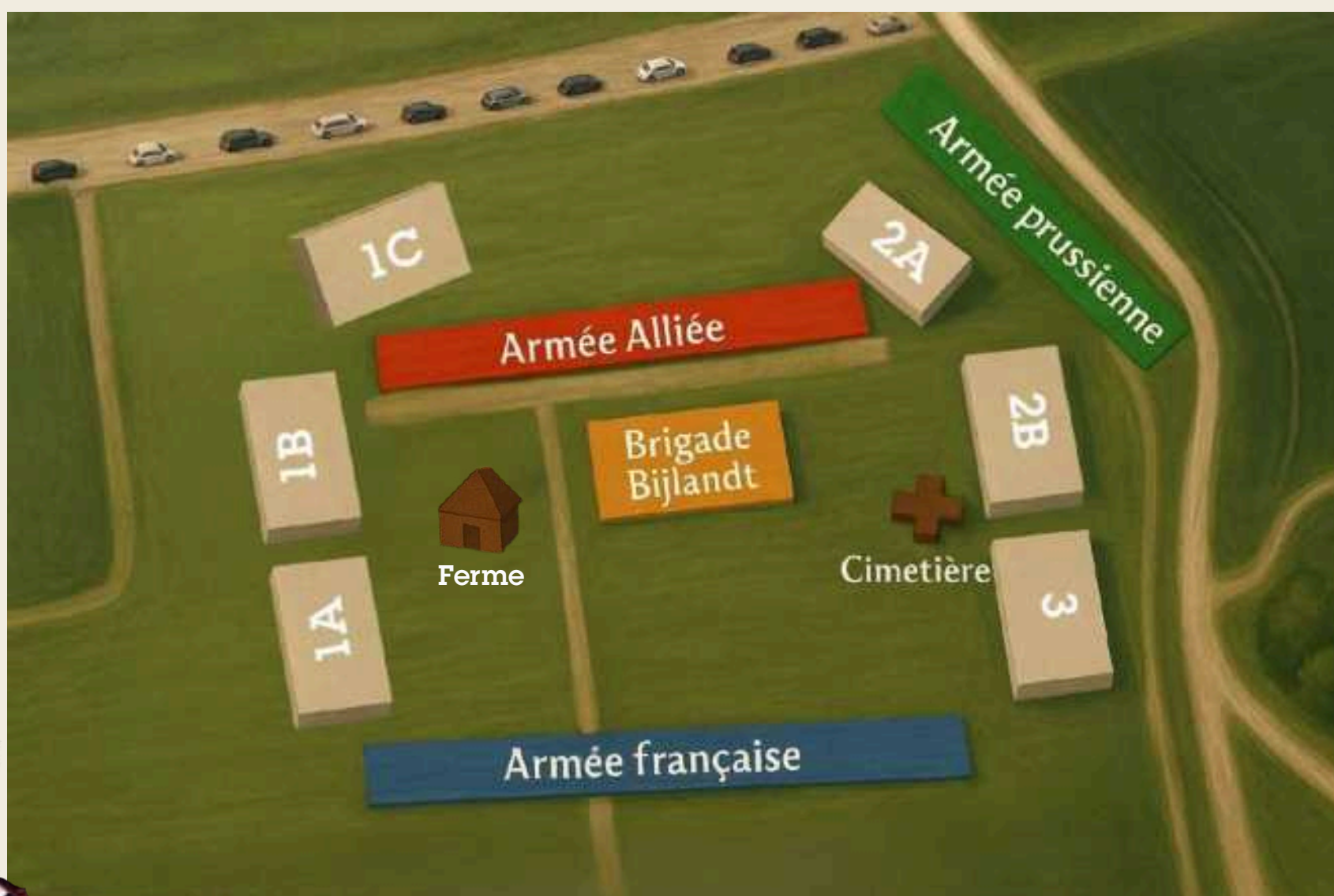
For many years, it was believed that Wellington's army was largely British. However, that is far from the truth: only one third of his army came from Great Britain. Unlike the continental armies, which were largely made up of conscripts, the British army was composed entirely of volunteers.

Although British troops did not make up the majority of the allied army, they provided Wellington with the most experienced and battle-hardened soldiers. Many of his regiments had fought the French in Portugal and Spain starting in 1808. Very few British regiments had no combat experience.

Blücher's Army

In 1806, the Prussian army had been crushed by Napoleon's troops at Jena and Auerstedt. Since then, it had been completely reorganized, and military service became mandatory. This young Prussian army was driven by a strong sense of nationalism and a desire for revenge. However, the cavalry and artillery, in particular, still suffered from a clear lack of experience. The infantry was well-drilled but unevenly equipped.

The great strength of the Prussians lay in the quality of their general staff, whose chief, Gneisenau, was an excellent complement to Marshal Blücher—energetic, though not always very subtle. This advantage allowed for great speed in troop movements, which would prove especially useful during the 1815 campaign.

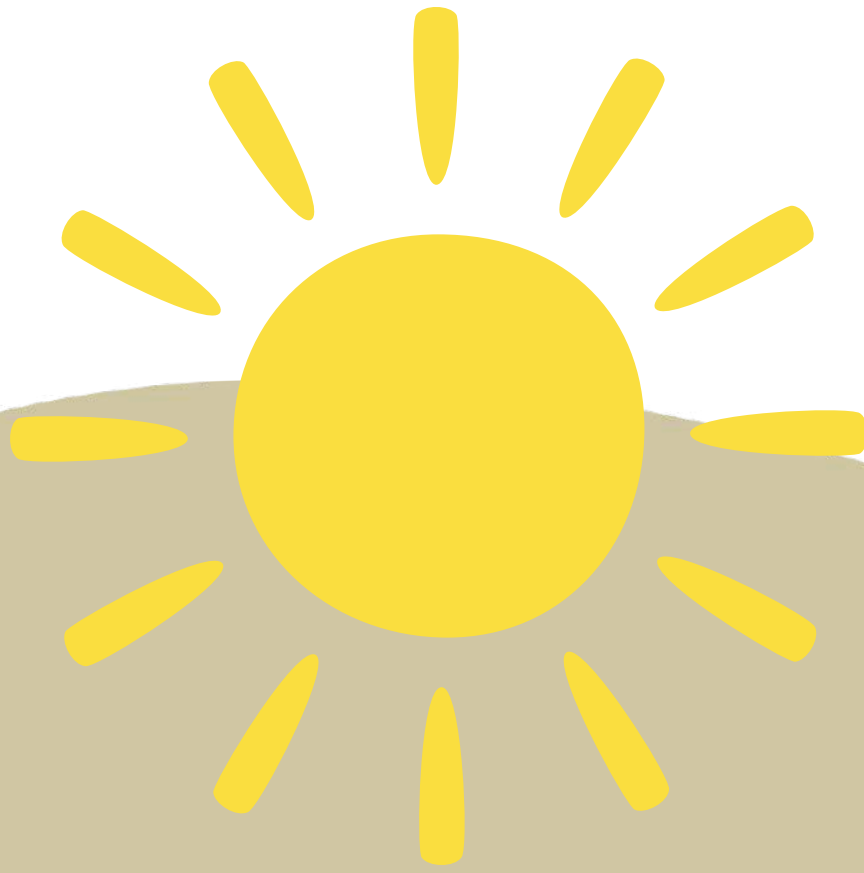


Napoleon's Army

The French army, known as the Army of the North, was composed largely of veterans from previous campaigns who had been recalled by Napoleon after his return from the island of Elba. These were seasoned soldiers, entirely devoted to their leader. The French cavalry was considered formidable. The artillery also enjoyed a strong reputation and held a clear numerical superiority over each opponent taken individually.

While the quality of the rank-and-file soldier was remarkable, it was offset by the state of the high command, where an atmosphere of betrayal prevailed. Several of Napoleon's marshals were either dead or unavailable—some occupied elsewhere, others having sworn allegiance to Louis XVIII.





It's going to be hot this weekend!

The forecast is calling for beautiful sunshine... and some pretty high temperatures! To make the most of the reenactment:

Drink water (often—not just when you're thirsty)
Cover your head (a cap, a hat, or even a bicornie—we're not judging)
Seek out shade whenever possible
Don't forget the sunscreen

And if you see someone who doesn't seem well, don't hesitate to alert a member of the staff.

Take care of yourselves and enjoy the weekend to the fullest!

COMMEMORATIVE MEDAL

On sale at the Panorama esplanade



THANK YOU

TO OUR COLLABORATORS

